

■ CEE plugs and sockets for reefer containers

13

Receptacles and panel mounted receptacles, 32A, IP 67

Page 264 and 265



Receptacles, switched and interlocked, DUO, 32A, IP 67

Page 264 and 265

Plugs and panel mounted inlets, 32A, IP 67

Page 264 and 265



Connectors, 32A, IP 67

Page 266 and 267

Panel mounted inlets, 32A, IP 67

Page 266 and 267



Phase sequence test plug, 32A, IP 44

Page 264 and 265

AMAXX® receptacle combinations, 32A, IP 67

Page 266

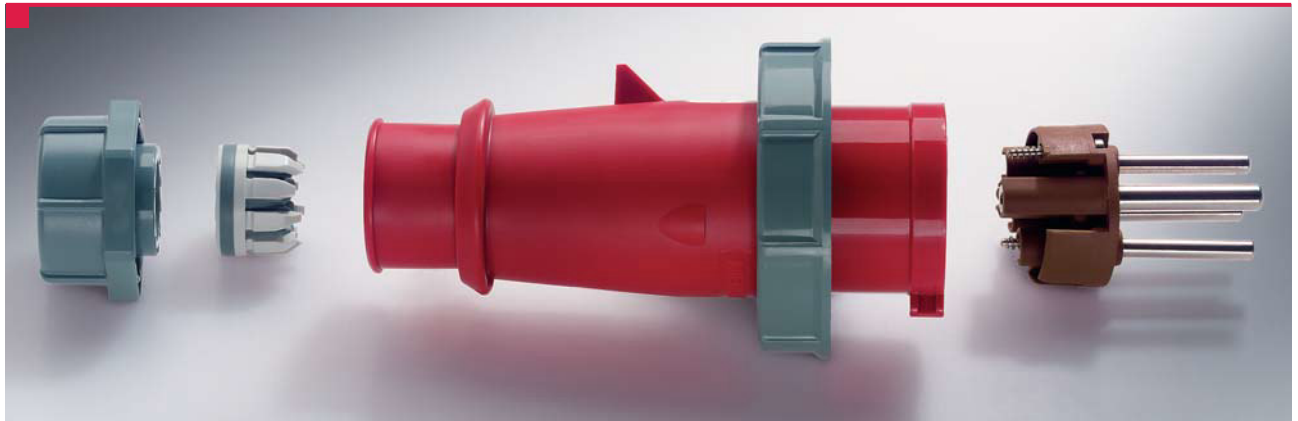


Stainless steel receptacle combinations, 32A, IP 67

Page 267

■ Plugs and sockets for reefer containers

Receptacles, plugs and connectors.



AM-TOP® plugs and connectors.

Stable enclosure consisting of one part. The teeth on the cable gland secure a safe grip and protect against loosening. The cable gland serves as an anti-bend protection for the cables at the same time.



Tight and durable.

Safety for all enclosures thanks to foamed seals: silicone, CFC and halogen-free. The permanently elastic seals ensure protection type IP 67 even after years of use.



Secure contact.

Nickel plated contacts and highly heat-resistant contact carriers provide optimum protection against corrosion and overheating.

Switched and interlocked receptacles.

Receptacles with the patented, mechanical DUO interlocking ensure that the receptacle can only be switched when inserting a plug.



The switch is locked in the OFF position.

The plug can only be inserted and withdrawn if the switch is in the OFF position. The switch can only be turned to ON when a plug is inserted in the receptacle.

The plug is locked in the ON position.

To remove the plug with the switch in ON position is not possible.

Proven a million times over on ships and at container terminals.

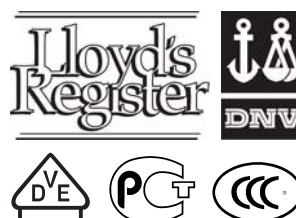
MENNEKES plugs and sockets have proven themselves a million times over in everyday application even under extreme conditions. Users throughout the world appreciate the reliability and durability of MENNEKES products.

Tested safety.

Internationally standardised refrigerated containers: earthing contact in the 3 o'clock position to IEC 309-2/EN 60309-2, protection type IP 67.



3h
3P+⏚



Receptacle combinations made of stainless steel or plastics.

Your selection: Plastic or stainless steel.

Only MENNEKES offers you the choice between stainless steel and plastic enclosures for receptacle combinations. Both materials are suited for application on ships as well as at terminals.



AMAXX®

receptacle combinations:

Receptacle combinations consist of robust enclosures made of the special plastic AMAPLAST used by MENNEKES.

Available from a single DUO interlocked receptacle up to combinations with five modules which can be fitted with three DUO receptacles and fusing.

They are expandable by flanging the combinations vertically or horizontally.

13

Stainless steel receptacle combinations:

Stainless steel receptacle combinations for connecting reefer containers on ships and at container terminals are available with two up to ten switched interlocked DUO receptacles 400-440V, 32A, 4p, earth contact at 3 o'clock position. Robust and durable enclosure made of stainless steel (material 1.4301) protect the electronic components from mechanical and environmental influences. Upon request, we can also manufacture the enclosures in stainless steel (material 1.4404).

Easy, fast and clear.

Fast connections save time: easier plug-in and withdrawal thanks to the slanted plug-in direction. With one turn, the plug is locked and the receptacle activated. Less screws mean less work. This allows you to open and close the combination unit quickly.



Variable cable entry.

Cable entry through cable gland in any position at the bottom or at the side.

Easy to install.

The large connection space facilitates the insertion and connection of large cable diameters.

Space-saving.

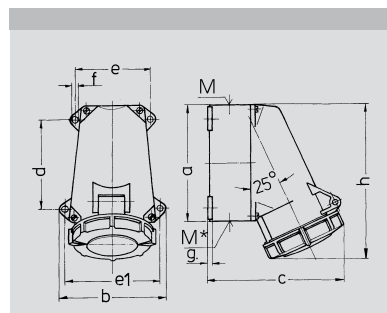
The slanted plug-in direction allows the space-saving alignment of several enclosures on top of each other. This eases planning and construction.

Easy control.

Time-saving and helpful: easy to detect switch position thanks to the clear switch position display of the proven DUO interlocking.

MENNEKES CEE plugs and sockets for reefer containers with highly heat resistant contact carrier and nickel plated contacts

Earthing contact in the 3 o'clock position in accordance with DIN VDE 0623, EN 60309-2, colour: electric grey and/or colour code. Enclosure and insert made of **AMAPLAST**. Other versions available on request.



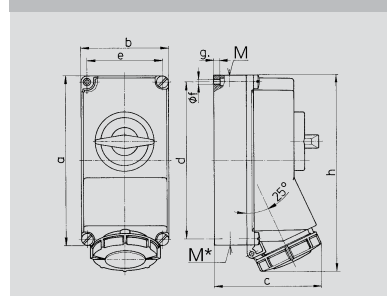
Drawing	Amp.	16			32		
1 MB 219	Poles	3	4	5	3	4	5
Dim. in mm	a	95	95	95	120	120	120
	b	102	102	102	112	112	112
	c	115	124	129	143	143	150
	d	64,2	64,2	64,2	90,2	90,2	90,2
	e	77,5	77,5	77,5	79	79	79
	f	88	88	88	98,5	98,5	98,5
	g	5,5	5,5	5,5	5,5	5,5	5,5
	h	128	128	132	160	160	160
	M	20	25	25	32	32	32
	M*	20	25	25	M 32 (blind)	to be cut out	to be cut out
Max. cable diam. (mm)		15	18	18	25	25	25
Terminal for cond. cross section (mm²) min.-max.		1,5 —4	1,5 —4	1,5 —4	2,5 —10	2,5 —10	2,5 —10

Receptacle

with highly heat resistant contact carrier and nickel plated contacts, 4 external fixings, one cable entry at top and one blind cable entry (can be cut out) at bottom

IP 67

Product group 1049, type 2644 shown.



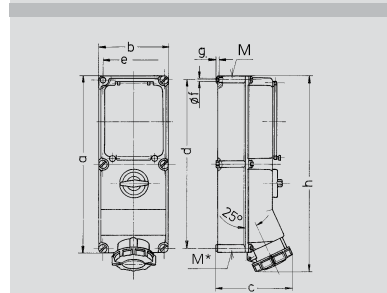
Drawing	Amp.	16			32		
1 MB 207	Poles	3	4	5	3	4	5
Dim. in mm	a	225	225	225	225	225	225
	b	118	118	118	118	118	118
	c	144	146	147	152	152	153
	d	208	208	208	208	208	208
	e	101	101	101	101	101	101
	f	6,3	6,3	6,3	6,3	6,3	6,3
	g	8	8	8	8	8	8
	h	252	255	259	268	268	274
	M	1xM25 and 1xM32	1xM25 and 1xM32	1xM25 and 1xM32	1xM25 and 1xM32	1xM25 and 1xM32	1xM25 and 1xM32
	M*	2x25	2x25	2x25	2x25	2x25	2x25
Max. cable diam. (mm)		25	25	25	25	25	25
Terminal for cond. cross section (mm²) min.-max.		1,5 —4	1,5 —4	1,5 —4	2,5 —10	2,5 —10	2,5 —10

Receptacle

with highly heat resistant contact carrier and nickel plated contacts, switched, with mechanical **DUO** interlock, may be padlocked in the OFF position

IP 67

Product group 1074, type 5792 shown.



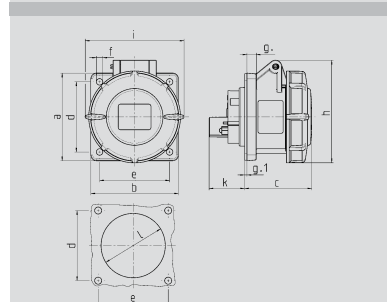
Drawing	Amp.	16			32		63	
1 MB 181	Poles	3	4	5	4	5	4	5
Dim. in mm	a	364	364	364	364	364	460	460
	b	134	134	134	134	134	180	180
	c	160	162	163	168	168	209	209
	d	347	347	347	347	347	440	440
	e	117	117	117	117	117	160	160
	f	6,3	6,3	6,3	6,3	6,3	8,1	8,1
	g	8	8	8	8	8	8	8
	h	391	395	398	408	411	525	525
	M	32/40	32/40	32/40	32/40	32/40	40	40
	M*	2x32	2x32	2x32	2x32	2x32	2x40	2x40
Max. cable diam. (mm)		27	27	27	27	27	27	27
Terminal for cond. cross section (mm²) min.-max.		1,5 —4	1,5 —4	1,5 —4	2,5 —10	2,5 —10	6 —25	6 —25

Receptacle

with highly heat resistant contact carrier and nickel plated contacts, switched, with mechanical **DUO** interlock and DIN rail, may be padlocked in the OFF position

IP 67

Product group 1089, type 5946 shown.



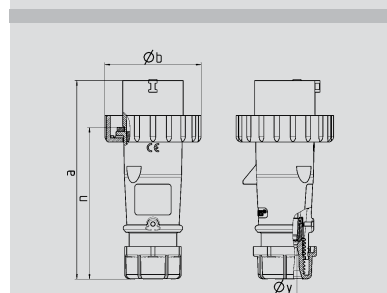
Drawing	Amp.	16			32		
1 MB 141	Poles	3	4	5	3	4	5
Dim. in mm	a	75	75	75	85	85	85
	b	75	75	75	75	75	75
	c	60	61	61	70	70	72
	d	60	60	60	60	60	60
	e	60	60	60	60	60	60
	f	5,5	5,5	5,5	5,5	5,5	5,5
	g	8	8	8	8	8	8
	g.1	2	2	2	2	2	2
	h	83	88	95	99	99	105
	i	78	85	96	103	103	110
	k	31	32	32	39	39	39
	l	43	52	54	58	58	65
Terminal for cond. cross section (mm²) min.-max.		1,5 —4	1,5 —4	1,5 —4	2,5 —10	2,5 —10	2,5 —10

Panel mounted receptacle

with highly heat resistant contact carrier and nickel plated contacts

IP 67

Product group 1046, type 2123 shown.



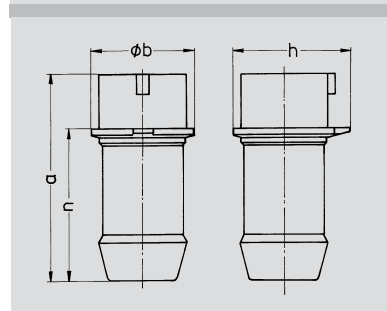
Drawing	Amp.	16			32		
2 MB 218	Poles	3	4	5	3	4	5
Dim. in mm	a	142	144	147	186	186	180
	b	70	78	87	94	94	101
	n	109	111	114	145	145	138
	y	14,5	16	16	22	22	22
Terminal for cond. cross section (mm²) min.-max.		1 —2,5	1 —2,5	1 —2,5	2,5 —6	2,5 —6	2,5 —6

Plug AM-TOP®

single part body, screw terminals, with highly heat resistant contact carrier and nickel plated contacts, cable gland and sealing, strain relief and protection against kinking

IP 67

Product group 2149, type 2175 shown.



Drawing	Amp.	16		32		63	
2 MB 140	Poles	4	5	4	5	4	5
Dim. in mm	a	126	129	145	145	211	211
	b	60	65	66	74	100	100
	h	62	69	71	80	100	100
	n	90	93	99	99	145	145

Phase sequence test plug

earthing contact in the 3 o'clock position, conforming to VDE 0413 part 9

IP 44

Product group 2070, type 3718 shown.

4



3p+E

**400 -
440V**
50 a. 60 Hz
4-pole
3hAmp.
Poles

Std. Pack.

Weihgt

Part numbers

Qty. g/each

32 4

2644

10 390



32 4

5792

1 1180



32 4

5946

2 2070



32 4

2123

10 245



32 4

2175

10 311



32 4

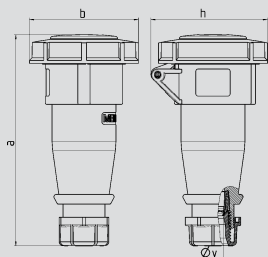
3718

5 212



MENNEKES CEE plugs and sockets for reefer containers with highly heat resistant contact carrier and nickel plated contacts

Earthing contact in the 3 o' clock position in accordance with DIN VDE 0623, EN 60309-2, colour: electric grey and/or colour code. Enclosure and insert made of **AMAPLAST**. Other versions available on request.



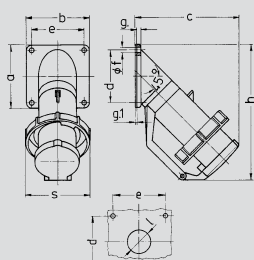
Drawing 3 MB 62	Amp. Poles	16			32		
		3	4	5	3	4	5
Dim. in mm	a	146	166	172	212	212	213
	b	72	79	89	96	96	102
	h	80	88	95	98	98	105
	y	14,5	16	16	22	22	22
Terminal for cond. cross section (mm²) min.-max.		1	1	1	2,5	2,5	2,5
		—2,5	—2,5	—2,5	—6	—6	—6

Connector AM-TOP®

with highly heat resistant contact carrier and nickel plated contacts, single part body, screw terminals, cable gland and sealing, strain relief and protection against kinking

☼ IP 67

Product group 3149, type 2117 shown.



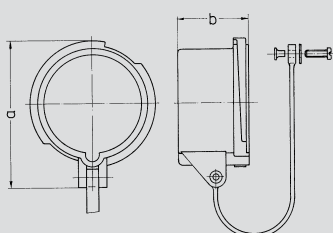
Drawing 2 MB 40	Amp. Poles	16				32		63			
		5	3	4	5	4	5	4	5		
Dim. in mm	a	85	85	85	85	114	114	114	114		
	b	85	85	85	85	114	114	114	114		
	c	141	141	141	144	180	180				
	d	70	70	70	70	90	90				
	e	70	70	70	70	90	90				
	f	6,2	6,2	6,2	6,2	6,2	6,2				
	g	6	6	6	6	6	6				
	g ₁	2	2	2	2	2	2				
	h	181	181	181	188	242	242				
	s	86	93	93	100	113	113				
	l	30	30	30	30	40	40				
	Terminal for cond. cross section (mm²) min.-max.	1	2,5	2,5	2,5	4	4				
		—2,5	—6	—6	—6	—10	—10				

Panel mounted inlet

with hinged lid, with highly heat resistant contact carrier and nickel plated contacts

☼ IP 67

Product group 2050, type 2692 shown.



Drawing 2 MB 146	Amp. Poles	32	
		4	
Dim. in mm	a	91	
	b	51	

Protective cap for plug 32A, 4p

Part no. 40841

☼ IP 67

Product group 8226, type 40841 shown.



AMAXX® receptacle combination for reefer containers

☼ IP 67, fusing under a transparent cover

Fitted with: 3 CEE receptacles 32A, 4p, 400-440V, 3h, switched and DUO interlocked
3 MCB's 32A, 3p, C
earth bolt M10, V2A

Enclosure size (H x W x D): 520 x 225 x 236 mm

Cable entry: 2 M40 at the top (open on the left side, on the right closed)
2 M40 at the bottom (closed), 2 M20 at the top closed,
2 M20 at the bottom (closed),
terminal for 1 cable 5 x 25 mm²

Part no. 940027



AMAXX® receptacle combination for reefer containers

☼ IP 67, fusing under a transparent cover

Fitted with: 3 CEE receptacles 32A, 4p, 400-440V, 3h, switched and DUO interlocked
3 MCB's 32A, 3p, C
3 monitoring sockets sim. to MS 3102E 14S2S
with protection cap and steel chain,
earth bolt M10, V2A

Enclosure size (H x W x D): 520 x 225 x 236 mm

Cable entry: 2 M40 at the top (open on the left side, on the right closed)
2 M40 at the bottom (closed), 2 M20 at the top closed,
2 M20 at the bottom (closed), terminal for 2 cables 5 x 25 mm²,
terminal 4 x 4 mm² for monitoring sockets

Part no. 940019

4



3p+E

**400 -
440V**
50 a. 60 Hz
4-pole
3hAmp.
Poles

Std. Pack.

Weight

Part numbers

Qty. g/each

32 4

2177

10 280



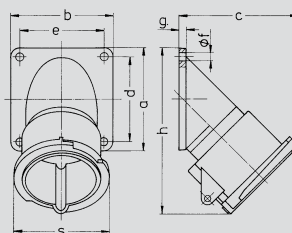
32 4

2692

10 354


Houlder
for plug 32A, 4p

Part no. 41342

 Product group 8215,
type 41342 shown.


Drawing	Amp.	32
2 MB 186	Poles	4
Dim. in mm	a	85
	b	85
	c	100
	d	70
	e	70
	f	6,2
	g	6
	h	138
	s	82

Stainless steel receptacle combination for reefer containers

☾ IP 67, cable entries according to supply cable size

 Fitted with: 4 CEE receptacles 32A, 4p, 400-440V, 3h, switched and DUO interlocked
MCCB 32A, 3p, 10kA

Enclosure size (H x W x D): 390 x 626 x 215 mm


Part no. 6002830
Stainless steel receptacle combination for reefer containers

☾ IP 67, cable entries according to supply cable size

 Fitted with: 5 CEE receptacles 32A, 4p, 400-440V, 3h, switched and DUO interlocked
MCCB 32A, 3p, 10kA

Enclosure size (H x W x D): 390 x 756 x 215 mm


Part no. 6002846